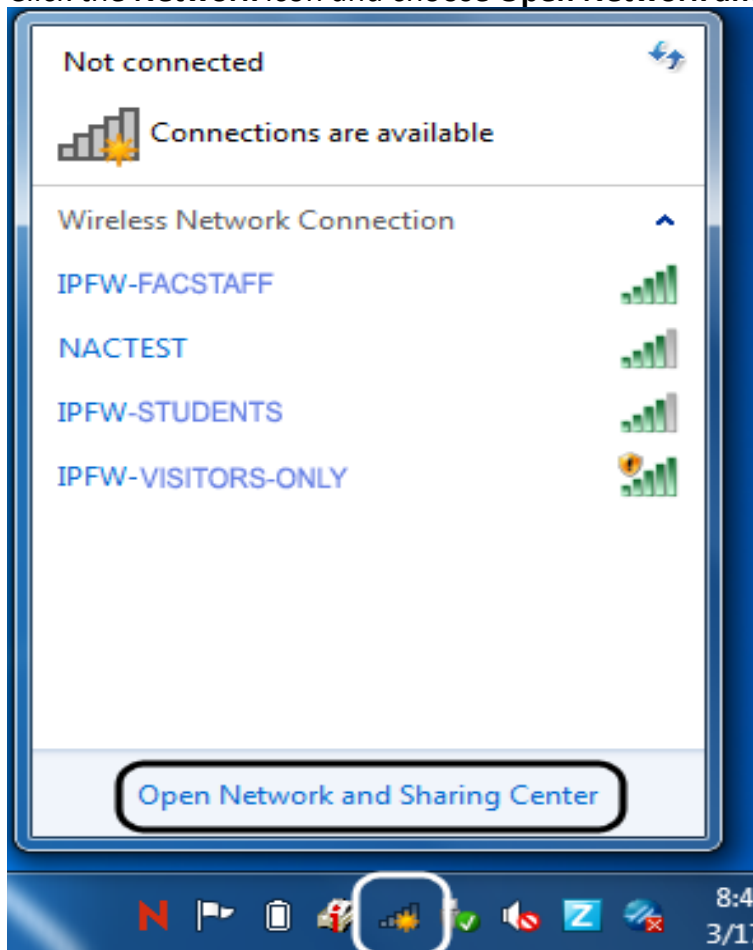
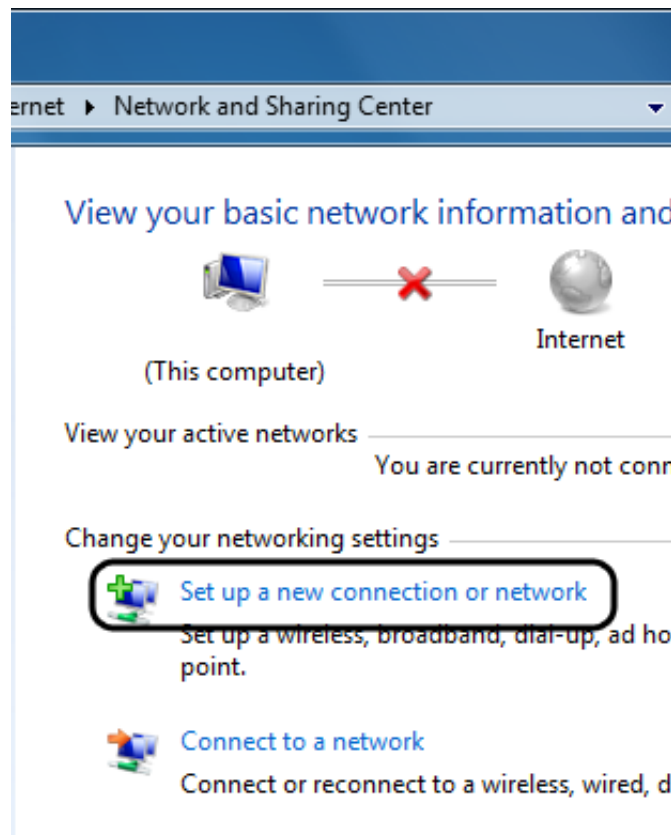


**Note:** You may be prompted during the configuration process to choose whether the new connection is to be a home, work, or public location. This setting controls the security for the wireless connection and it is recommended that you select public location for maximum security.

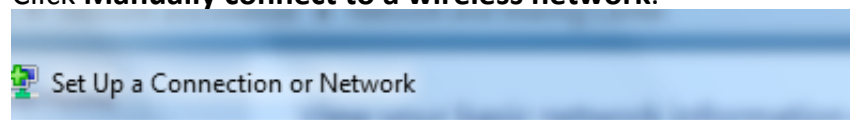
1. Locate the **Network** icon in your system tray.
2. Click the **Network** icon and choose **Open Network and Sharing Center**.



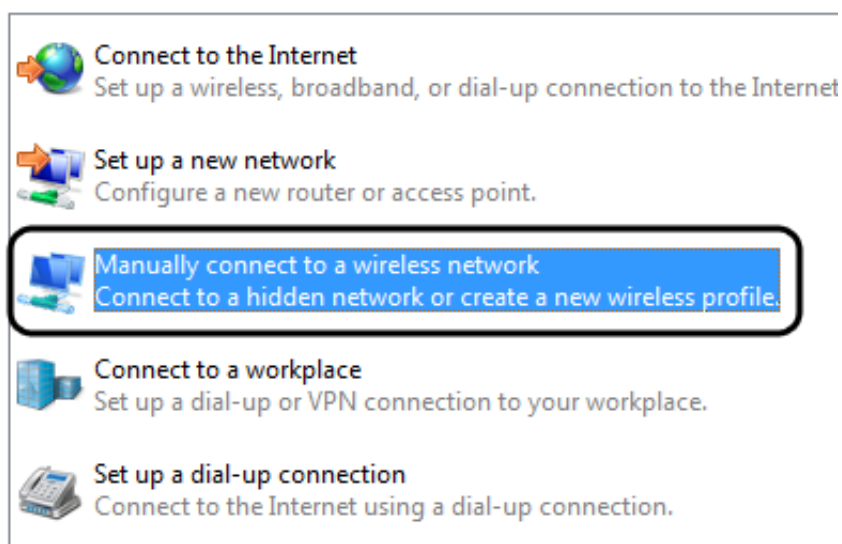
3. Click **Set up a new connection or network**.



4. Click **Manually connect to a wireless network**.



### Choose a connection option



5. Fill in the following boxes with this information:
  - a. Network Name:
    - i. For Faculty and Staff: **IPFW Faculty Staff**

- ii. For Students: **IPFW Student**
  - b. **Security type:** WPA2 Enterprise
  - c. **Encryption type:** AES
6. Click **Next**.

Manually connect to a wireless network

Enter information for the wireless network you want to add

Network name:

Security type:

Encryption type:

Security Key:   Hide characters

Start this connection automatically

Connect even if the network is not broadcasting

Warning: If you select this option, your computer's privacy might be at risk.

Manually connect to a wireless network

Enter information for the wireless network you want to add

Network name:

Security type:

Encryption type:

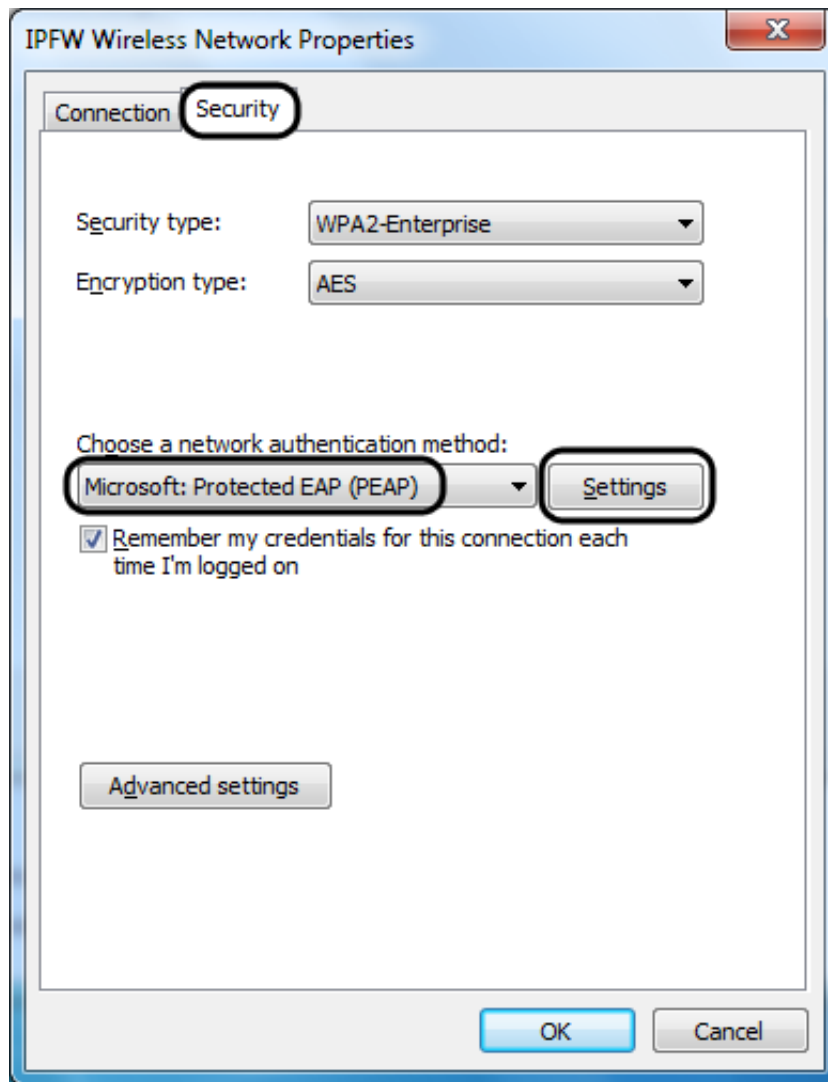
Security Key:   Hide characters

Start this connection automatically

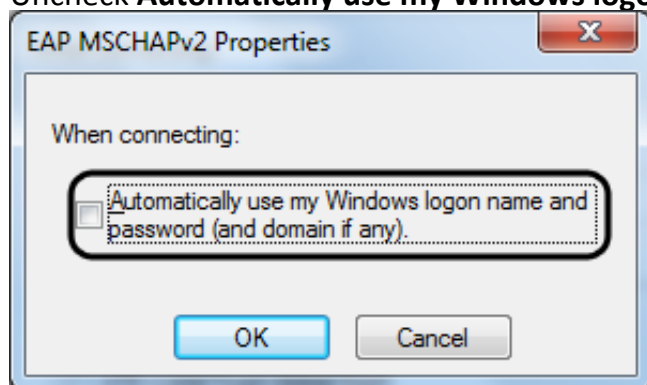
Connect even if the network is not broadcasting

Warning: If you select this option, your computer's privacy might be at risk.

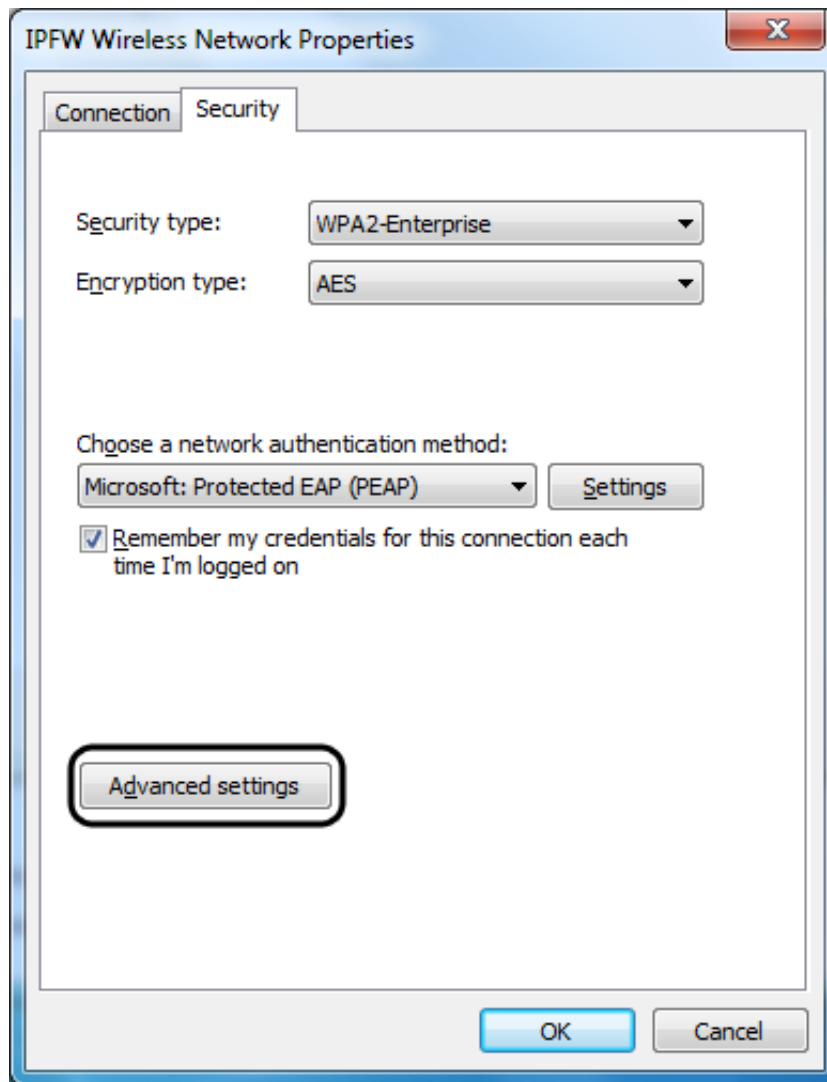
7. Click **Change connection setting**.
8. Click the **Security** tab and select **Microsoft: Protected EAP (PEAP)** from the **Choose a network authentication method**, then click **Settings**.



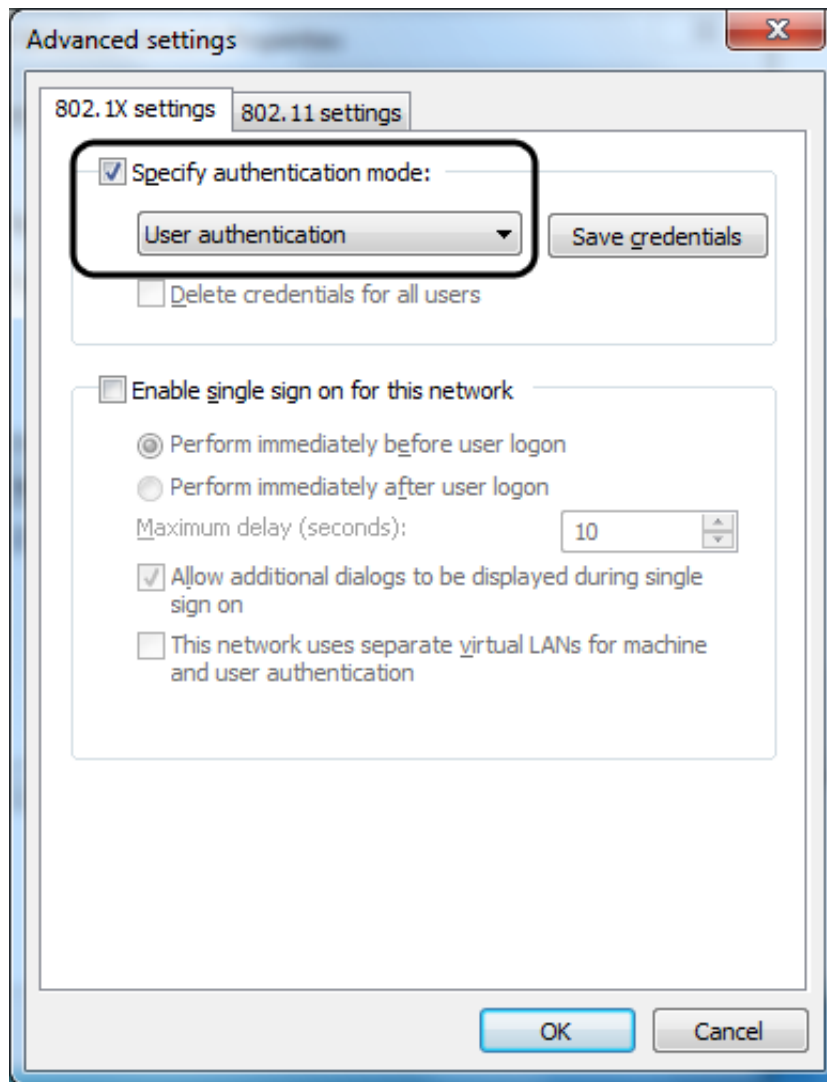
9. Uncheck **Validate server certificate**.
10. In the **Select Authentication Method** drop-down menu, verify **Secured password (EAP-MSCHAP v2)** is selected and click **Configure...**
11. Uncheck **Automatically use my Windows logon name and Password (and domain if any)**.



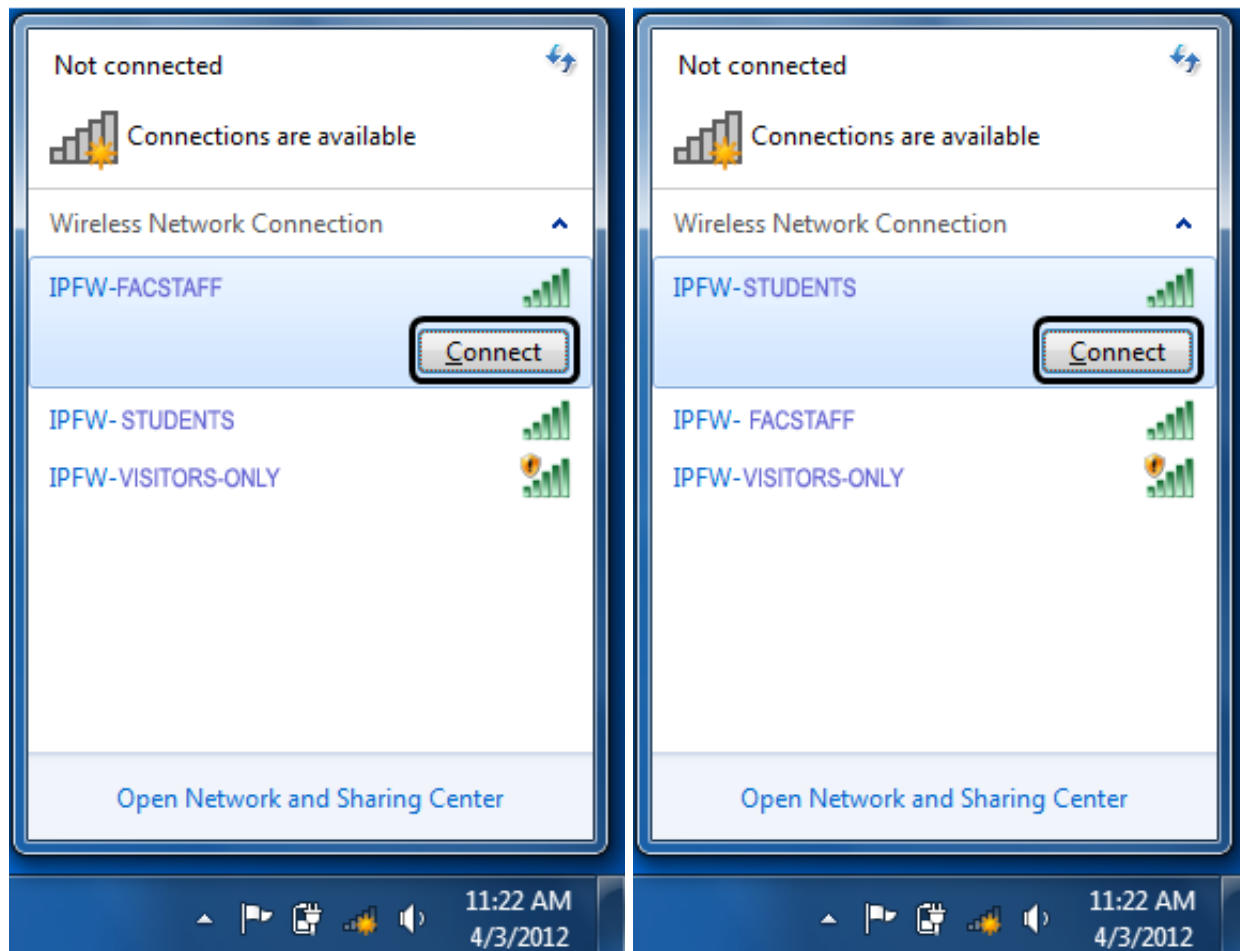
12. Click **OK** in the EAP MSCHAPv2 Properties window.
13. Click **OK** in the Protected EAP Properties window.
14. Click **Advanced settings** from IPFW Wireless Network Properties.



15. Ensure **Specify authentication mode** is selected and select **User authentication** from the drop-down menu > click **OK**.



16. Click **OK** in the IPFW Wireless Network properties window.
17. Click **Close** in the Manually connect to a wireless network.
18. Click the **Network** icon, select **IPFW Faculty Staff** or **IPFW Student** from the wireless network list, and click **Connect**.



19. Enter your Username and Password in the respective fields and click **OK**.

