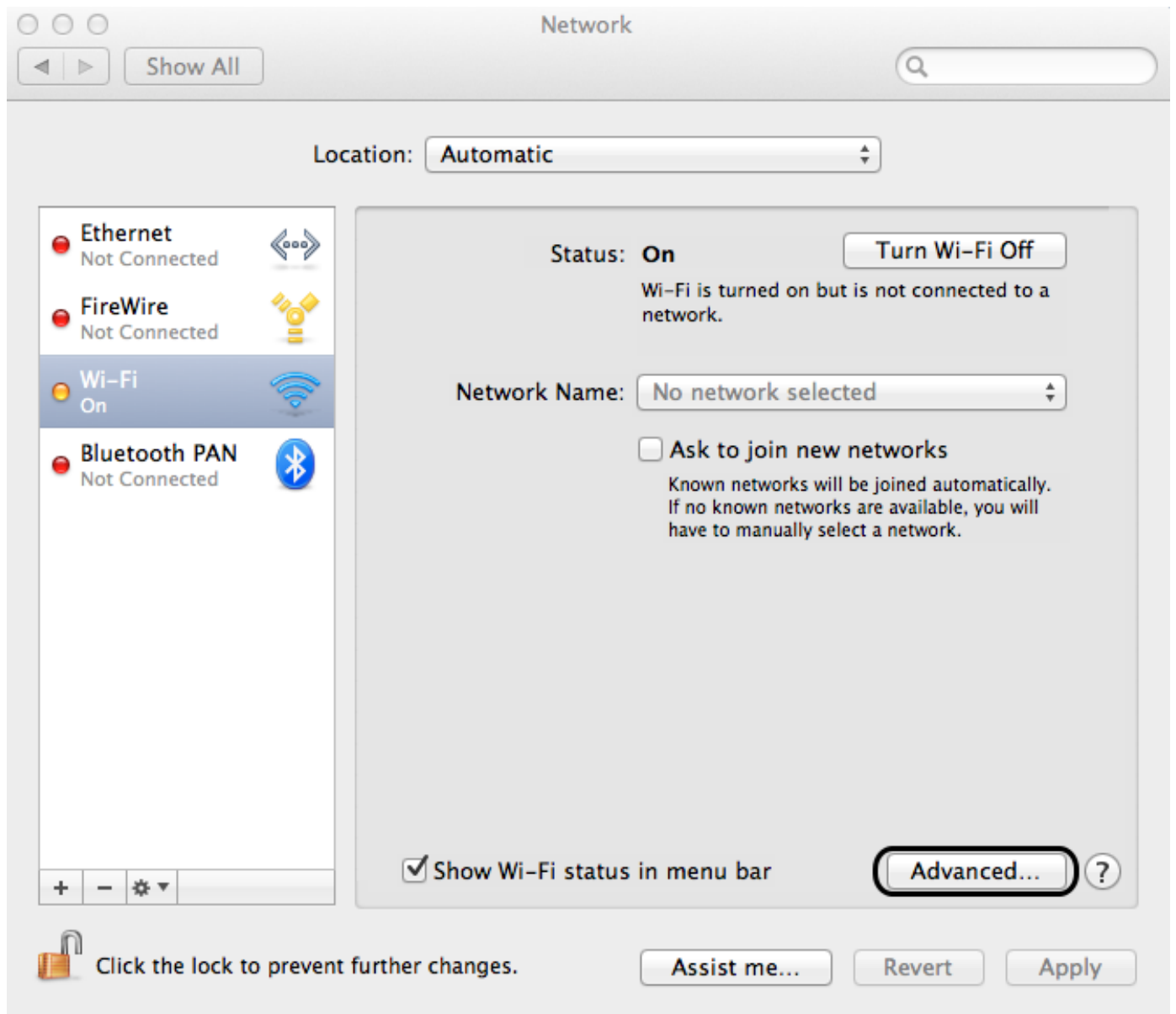


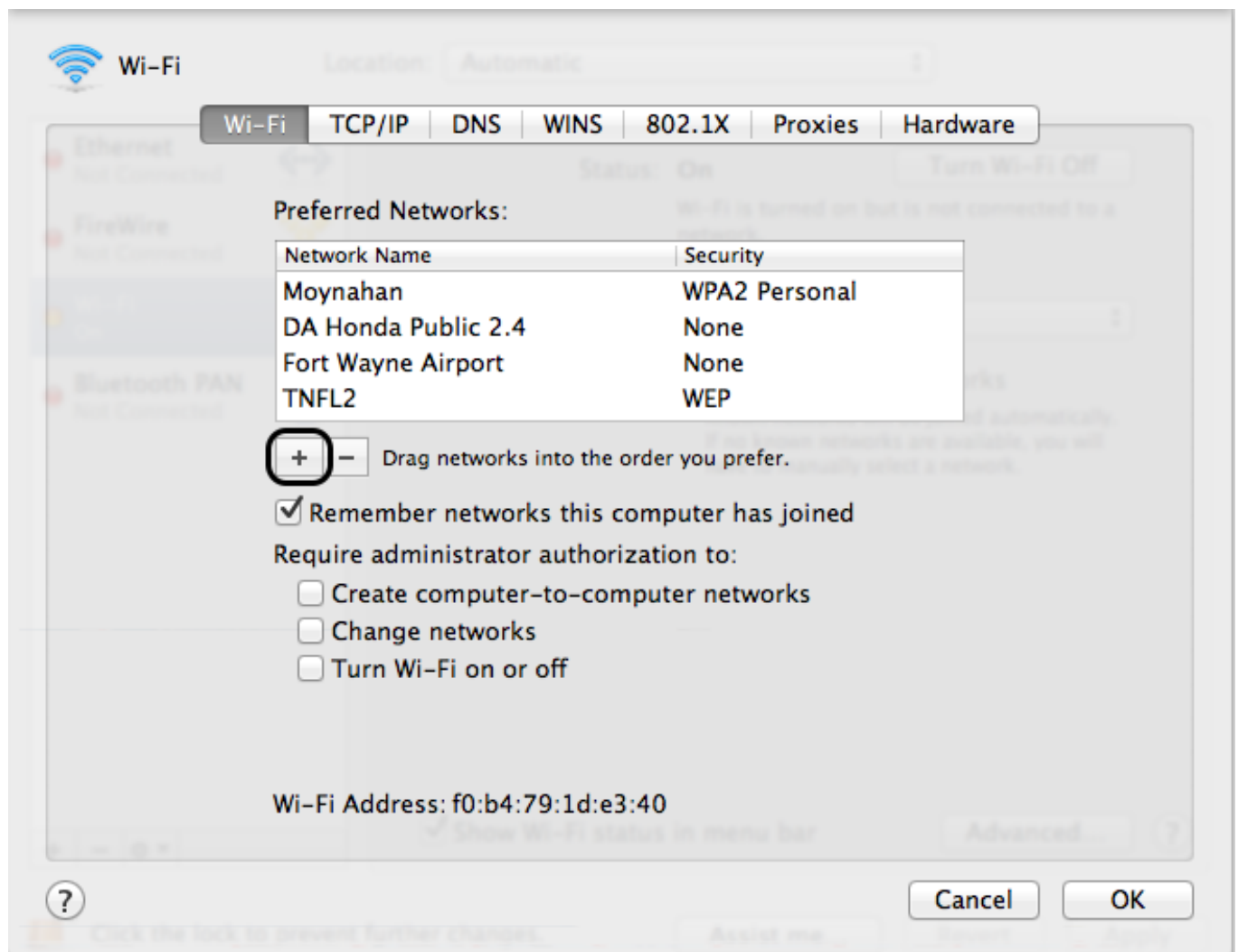
1. Locate the Wi-Fi icon in the Menu bar.
2. Click on the Wi-Fi icon and ensure Wi-Fi is **ON**.
3. Click **Open Network Preferences...**



4. Click **Wi-Fi > Advanced...**



5. Click the **Plus (+)** icon > **Add Wi-Fi Network**.



6. In the **Add a Wi-Fi network profile** window, enter the following information:
 - a. Network Name
 - i. For Faculty or Staff: **IPFW Faculty Staff**
 - ii. For Students: **IPFW Student**
 - b. Security: **WPA2 Enterprise**
 - c. Mode: **Automatic**
 - d. Username: your IPFW username
 - e. Password: your current IPFW password

Add a Wi-Fi network profile.
Enter the name and security type of the profile you want to add.

Network Name: IPFW-FACSTAFF

Security: WPA2 Enterprise

Mode: Automatic

Username: username

Password:

Show password

Remember networks this computer has joined

Choose a network... Cancel OK

Add a Wi-Fi network profile.
Enter the name and security type of the profile you want to add.

Network Name: IPFW-STUDENTS

Security: WPA2 Enterprise

Mode: Automatic

Username: username

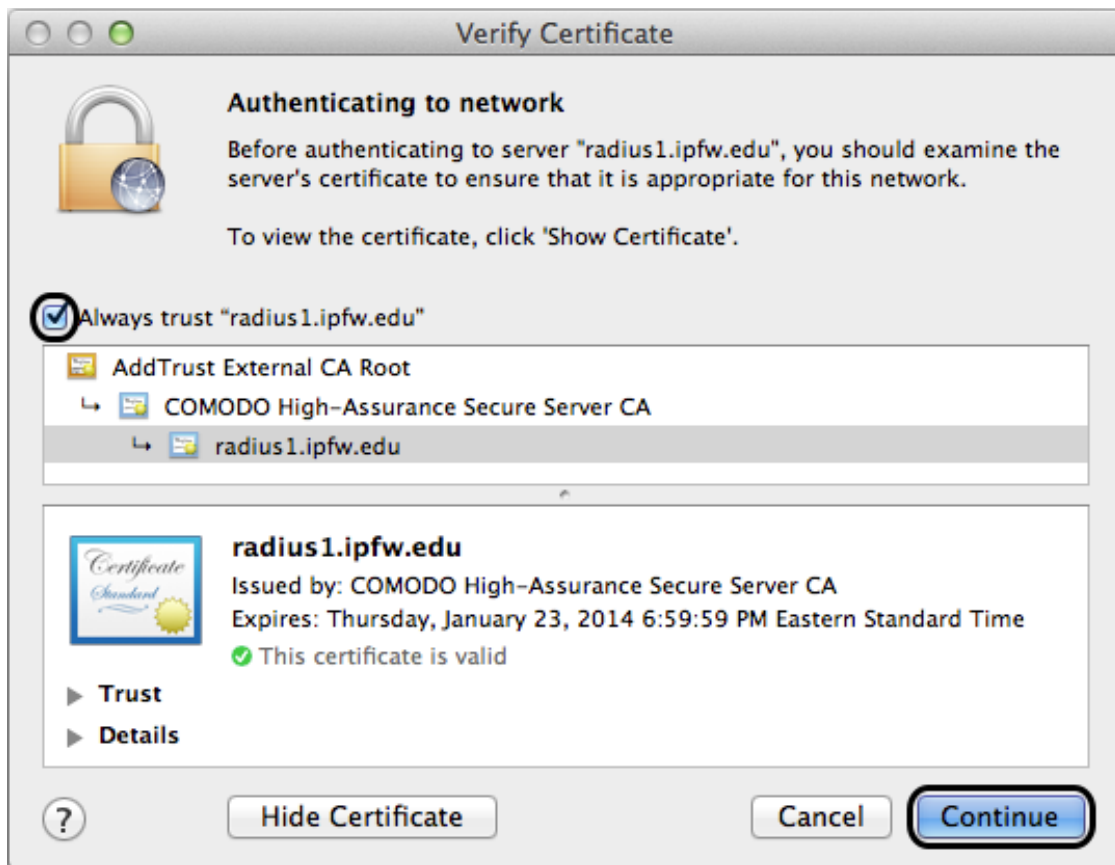
Password:

Show password

Remember networks this computer has joined

Choose a network... Cancel OK

7. Click **OK**.
8. Click **OK > Apply**.
9. Select **IPFW Faculty Staff** or **IPFW Student** from the **Network Name** drop down.
 - a. A Verify Certificate popup will show up.
10. Click **Show Certificate**.
11. Check the **Always trust** box and click **Continue**.
 - a. **Note:** You may have to accept multiple certificates.



12. Enter your Mac's login **Name** and **Password** when prompted.
13. Click **Update Settings**.
 - a. **Note:** If you are prompted to accept an additional certificate after attempting to authenticate, go through steps 12-14 again.

