

Reading Questions for Section 5.3 (7 pts)

Name _____

Due Date: _____

- (1) 1. Section 5.3 begins with an example involving a stereo amplifier.
Why do the t -intercepts remain fixed?
-

- (1) Questions 2-5 are about **Section 5.3 Example 1**.

2. In part (a), complete the blank to report the horizontal asymptote of $r(t)$ in Figure 5.26.

$y =$ (Write a number in the box.)

- (1) 3. In part (a) what does the horizontal asymptote of the function $r(t)$ in Figure 5.26 represent? (Select one)
- A. room temperature
 - B. the final temperature of the oven
 - C. the time it takes for the yam to cook completely.
 - D. the maximum number of people who will eat yam.

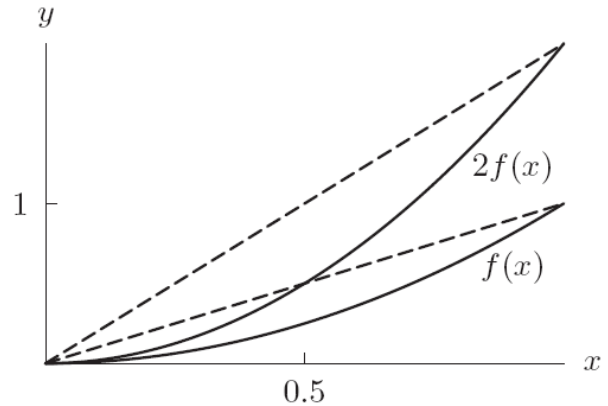
- (1) 4. In part (b), complete the blank to report the horizontal asymptote of $q(t) = 1.5r(t)$ in Figure 5.27.

$y =$ (Write a number in the box.)

- (1) 5. In part (b) what does the horizontal asymptote of the function $q(t)$ in Figure 5.27 represent? (Select one)
- A. room temperature is one and a half times warmer.
 - B. the final temperature of the oven is one and a half times hotter.
 - C. the time it takes for the yam to cook completely is one and a half times longer.
 - D. one and a half times more people will eat yam.

- (1) 6. Read Section 5.3 about **Stretch Factors and Average Rates of Change**. What is the relationship between the two dashed lines shown in the figure?

- A. one is twice as long as the other.
- B. one has twice the slope of the other
- C. Both A and B.
- D. Neither A nor B.



- (1) 7. Recall the graph of $y = |x|$ from Section 2.3. After reading Section 5.3, what is the value of k in the function $y = k|x|$ as shown in the figure?

- A. $3/2$
- B. $2/3$
- C. $-3/2$
- D. $-2/3$

