

NOVEMBER  
2009



# CELT NEWS

Newsletter of the Center for the Enhancement of Learning and Teaching

## Need feedback for your online course? Online peer review might be for you!



By Michelle Drouin, PSY

CELT and Distance Learning have implemented an online formative peer review program to help faculty build and maintain effective online courses. This program functions in much the same way as our other formative peer review programs on campus and aims to provide constructive feedback to online instructors about the design of their online courses. The online peer reviewer provides feedback based on a comparison of course attributes with a research-validated rubric outlined by the Quality Matters™ organization. The Quality Matters™ peer-led process and rubric are products of a six-year FIPSE sponsored program led by the University of Maryland. (<http://qualitymatters.org/>)

Thus far, six IPFW faculty members have become certified QM peer reviewers, and Distance Learning plans to fund the training of four more faculty representing departments ranking in the top 8 for online enrollments. Meanwhile, 10 reviews have been conducted, and 4 are in progress. Many of the reviews that have already taken place involve DECCO grant winners, as a portion of the grant supports this formative peer review process. However, **this opportunity is available to all IPFW faculty.**

### What is involved?

CELT pairs the reviewers with those seeking reviews and notifies Distance Learning when the review is completed. The details of the review are confidential and the reviewed

faculty member makes the final decision on how to use the feedback provided by the reviewer.

### Who is eligible?

This opportunity is open to all IPFW faculty. Reviewed faculty members will receive \$250 in professional development funds for their participation. DECCO grant winners are given the last \$250 of their grants when the design review has been completed.

### When can I do it?

The review is most appropriate for instructors who have taught the online course being reviewed at least once. The online peer reviewers are presently working on a list of criteria and supplemental materials for those wishing to determine whether their course is ready to be reviewed.

### Whom do I contact for a review?

Please contact **Gail Rathbun** at: [rathbun@ipfw.edu](mailto:rathbun@ipfw.edu) or 481-6504 for more information about how you can have your online course reviewed by one of IPFW's certified peer reviewers. Remember, a formative peer review of your online course design may help student learning and is a great way to help document your teaching effectiveness.

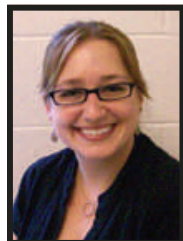


Looking for a past edition  
of the CELT News? You  
can find it on our website!

[www.ipfw.edu/celt](http://www.ipfw.edu/celt)

## CELT Profiles—Featuring our Founders

By Jennifer Stewart, ENGL



We continue our CELT celebration by profiling two more founding members of CELT. This month, we feature Marcia Dixon and Patrick Ashton, who reflected on their involvement with CELT.

**Marcia Dixon**, Associate Professor of Communication (2002 - 2004)—In 2000, Dixon was hired as CELT's first director. Dixon and the first members of the CELT Advisory board formed three subcommittees to address formative peer review of teaching,

collaborative teaching communities, and summer instructional grants.

### **What did you find most beneficial about your involvement with CELT?**

The opportunity to work with other faculty passionate about teaching at IPFW.



**What was your biggest contribution or activity development project?** Being Director of CELT for three years - developing peer review of teaching.

(Continued on page 2)



**Patrick Ashton**, Associate Professor of Sociology and Director of Peace and Conflict Studies (1999 – 2005)—Ashton has been an active member of CELT and FACET for several years.

**What did you find most beneficial about your involvement with CELT?**

The opportunity to collaborate with other excellent, involved, creative, and dedicated teachers. The discussion and sharing gave me insights into my own teaching, and the support network has

been useful to me personally as well as helping to validate excellent teaching at IPFW.

**What was your biggest contribution or activity development project?** First and foremost, I think my biggest contribution was, as a Founding Board Member, collaborating with others to get CELT started in the first place (establishing a mission, vision, and organizational structure), and then hiring a full-time director.

**Where would you like to see CELT go in the future?** I see what CELT has done and is doing as extremely valuable. So I'd like to make sure that it has the resources to continue supporting the development and sharing of innovative teaching techniques. I also hope that it can advocate for the teaching mission of IPFW and those faculty who are doing excellent work. I think that the current work with FACET on summative review of teaching has the potential to change the culture of IPFW.

## FACET Corner

By *Tiff Adkins*

The December 3rd deadline for membership in The Faculty Colloquium on Excellence in Teaching (FACET) is fast approaching. If you aren't applying this year, have you considered joining this group? As a member of FACET, one will find ample opportunities to continue to grow professionally through publications, workshops, and conferences. Especially informative is The Journal of Scholarship of Teaching and Learning, sponsored by FACET. This refereed journal offers articles on teaching and learning in higher education. Besides being an excellent source for articles on pedagogical issues and practices, this journal is available FREE for the benefit of all, even if you are not a member of FACET. Check it out at [www.iupui.edu/~josotl/index.php](http://www.iupui.edu/~josotl/index.php)

Recently, FACET members at IPFW have been conducting meetings to discuss the summative review of teaching. They are cur-

rently working on creating a best practices document for this process. This year, all IPFW faculty members can take advantage of a planned Summative Review Workshop facilitated by IPFW FACET members that will address issues such as the overall review process, evidence for inclusion, and documentation. Also look for a series of Lunch Sessions for Second Year Faculty in the coming months that will offer discussions on teaching related issues.



Remember to contact **Yvonne Zubovic** (Mathematics) for more information about FACET membership and activities. Visit the FACET Web site at [www.facet.iupui.edu/index.php](http://www.facet.iupui.edu/index.php)

## More CELT History: The role of FACET

By *Gail Rathbun*

In 1998, IPFW was the only campus in the IU System without a structured faculty development program, although many disparate groups on campus provided services in support of teaching. At the same time, the university's strategic plan included the goals of continued improvement in the quality of undergraduate teaching and recruiting and supporting a faculty dedicated to excellence in teaching. After attending a FACET summer leadership institute, an IPFW leadership team proposed a teaching center to the VCAA, identifying low or no-cost goals. Among these goals were an inventory of professional development activities at IPFW, implementation of a needs assessment, creation of a mission statement and a structure, and development of a position description for the Director. In 1999 FACET members comprised the core set of volunteers who designed and implemented workshops on formative peer review, modern classroom teaching strategies, and integration of technology into teaching, among other topics, and who as members of the Advisory Board, guided the work CELT.

## ISSOTL 2009

On October 22-25, the IPFW CASTL (Carnegie Academy for the Scholarship of Teaching and Learning) committee attended the sixth annual international conference of the International Society for the Scholarship of Teaching and Learning (ISSOTL), which took place in Bloomington, IN. Committee members also attended and presented a poster session at a day-long symposium given by and for the 40+ CASTL Affiliate institutions on October 21. (You can download .pdf of the poster, which outlines our accomplishments and goals, at <http://www.ipfw.edu/celt/learning/sotl.shtml>.) This symposium was the final meeting of participants in this 10-year Carnegie program, though our committee will have permission to use the Carnegie name for the next two years.

IPFW faculty **Jody Ross**, PSY, **B. Joon Kim**, DPEA, **Michael Bendele**, PSY, and **Beth Kaskel**, NUR, presented at the conference. **Britton Wolfe**, CS, also attended.

CASTL Committee members are: Gail Rathbun, CELT Director and Committee Chair; Michael Bendele, PSY; **Linda Lolkus**, CFS; **Carolyn Stumph**, ECON; Yvonne Zubovic, MATH; and Jody Ross, PSY (interim member).

## CELT Advisory Board Members

**Gail Rathbun**      **KT 234**    **x16504**  
Director, CELT

**Tiff Adkins**      **LB 156**    **x16708**  
Reference Librarian, Helmke Library

**Stella Batagiannis**    **NF 240D**   **x16452**  
Assistant Professor, Educational Leadership

**Michael Bendele**    **NF 322**    **x16436**  
Continuing Lecturer, Psychology

**Michelle Drouin**    **NF 380A**   **x16398**  
Assistant Professor, Psychology

**Jane Leatherman**    **NF 240F**   **x15724**  
Assistant Professor, Special Education

**Jennifer Stewart**    **CM 273**    **x16073**  
Continuing Lecturer, English & Linguistics

**Carolyn Stumph**    **NF 340F**   **x16475**  
Assistant Professor, Economics

**Sara Webb-Sunderhaus** **CM 117**    **x10153**  
Assistant Professor, English & Linguistics

### EX-OFFICIO

**Kathleen O'Connell**   **KT 174**    **x15795**  
Associate Vice Chancellor for Faculty Affairs

**Joseph McCormick**   **KT 204M**   **x15469**  
Manager of User Technology Support,  
Information Technology Services



## CELT Teaching Fellows

**Michael Bendele**    **NF 322**    **x16436**  
Continuing Lecturer, Psychology

**Jeff Nowak**      **NF 240E**   **x16960**  
Associate Professor, Educational Studies

**Karol Dehr**      **CM 125**    **x16074**  
Continuing Lecturer & Associate Director of  
Writing, English & Linguistics

**Ron Duchovic**      **SB 482**    **x16293**  
Fellow-in-Training  
Associate Professor, Chemistry

**Registration is required**

**for all CELT events.**

**You may register to attend at**  
**[www.ipfw.edu/celt](http://www.ipfw.edu/celt)**

*CELT News is published by the Center for  
the Enhancement of Learning and  
Teaching and the CELT Advisory Board.*

*-Michelle Drouin, Editor*

*-Kyle Richmond, Graphic Designer*

## 13th Annual Fort Wayne Teaching Conference February 26, 2009

The Thirteenth Annual Fort Wayne Teaching Conference will take place on Friday, February 26, 2010 in the Walb Student Union of IPFW. The conference theme is "Crossing the Finish Line: Critical Retention Challenges." The conference is open to faculty of area colleges and universities. This conference theme offers an opportunity for faculty members and student development personnel to submit a relatively wide range of proposals. Proposal topics could include:

Academic Skills Advancement

Academic Engagement

First Year Initiatives

Retention Challenges

This is not an exhaustive list. Proposals representing a wide range of approaches are encouraged. Proposals must be submitted electronically **no later than 5:00 p.m. on Tuesday, December 1, 2009.**

To submit a proposal go to  
<http://www.fortwayneteachingconference.com>.



## Important CELT dates

**January 5, 2010** Mack Fellow Applications due to FACET  
<http://www.facet.iupui.edu/mackfellows.php>

**January 30, 2010** DECCO grant proposals due for Spring 2011 courses  
<http://www.ipfw.edu/dcs/dlcoursedev/>

**February 26, 2010** Fort Wayne Teaching Conference  
<http://www.fortwayneteachingconference.org/> (Proposals due 12/1/09)

**March 1, 2010** Applications to become a CELT Teaching Fellow due  
<http://www.ipfw.edu/celt/grants/fellowsh ips.shtml>

**March 15, 2010** Associate Faculty Teaching Award nominations due  
<http://www.ipfw.edu/vcaa/resources/default.shtml>

**March 15, 2010** CELT Instructional Development Grant proposals due  
<http://www.ipfw.edu/celt/grants/grants.shtml>

## Upcoming Events for November 2009

### Online Workshops

#### Writing Learning Objectives

Starts Monday, November 9 and ends Friday, November 20 (2 weeks)

Facilitator: Gail Rathbun

#### Workshops on Teaching and Research

##### SoTL Workgroup

Monday, November 2, and Monday, November 30 from 1:30 pm - 2:30 pm in KT 101

Co-Facilitators: Michael Bendele, Psy and CASTL Committee members

##### FYE Thursday Brown Bag

Thursday, November 5, from 12:00 pm - 1:15 pm in KT 234

Co-hosted by CELT and FYE

##### Nuts and Bolts Workshop for IRB Certification (ORES)

Monday, November 16, from 1:30 pm - 2:30 pm in LB 419

Facilitated by Jeannie DiClementi, IPFW IRB Representative

Email or phone Jane Markin in ORES at 481-4101 to register.

##### 12 O'clock Scholars Brown Bag Series: What is Formative Peer Review?

Monday, November 30, from 12:00 pm - 1:15 pm in KT 234

Facilitated by Yvonne Zubovic,

**March 15, 2010** Nominations due for Friends of the University Outstanding Teacher Award

<http://www.ipfw.edu/vcaa/resources/default.shtml>

**March 15, 2010** Nominations due for Leepoxy Teaching Award

<http://www.ipfw.edu/vcaa/resources/default.shtml>

**April 2, 2010** P.A. Mack Award nominations due

<http://www.facet.iupui.edu/pamack.php>

**April 7, 2010** CELT's 10th Anniversary reception in the Rhinehart Center

**April 19, 2010** CELT Board nomination packets due Contact CELT

**May 21-23** FACET Retreat, May 11 CELT SID Institute, mid-May CELT Retreat

<http://events.facet.iupui.edu/events/Retreat/newsite2009/09RetreatPhotos.html>